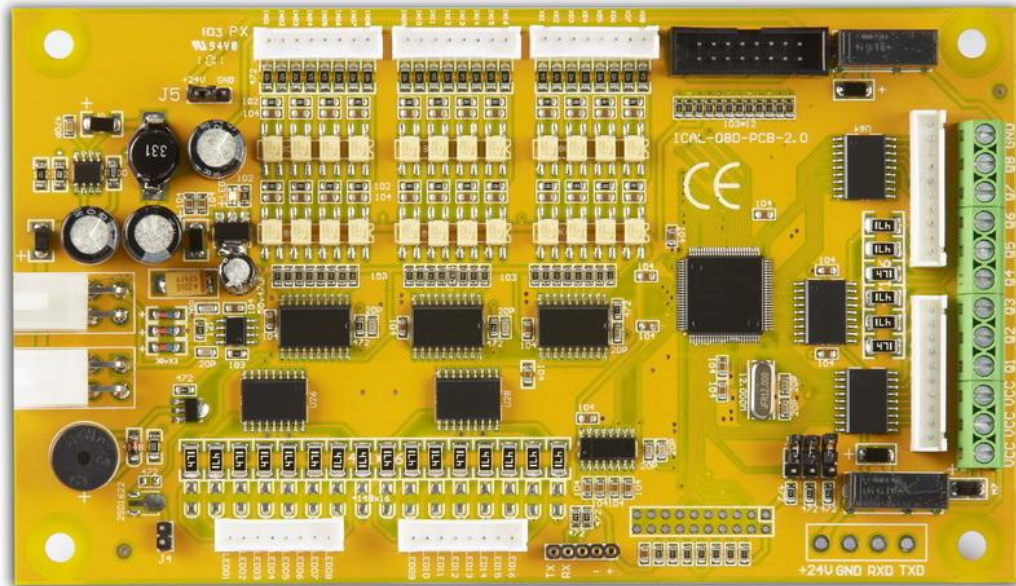
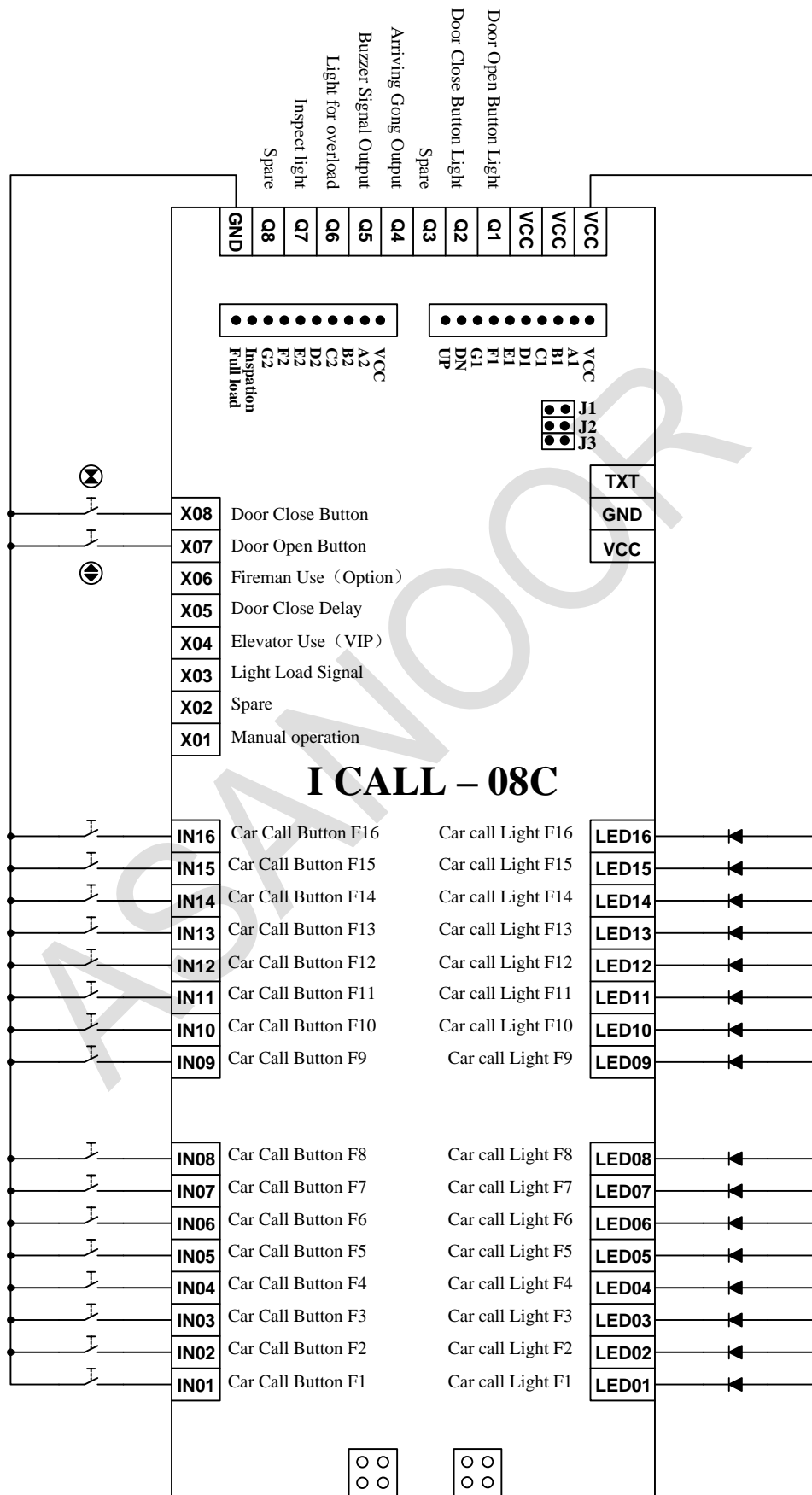


ICALL - 08



ASANOR
LIFT CONTROLLER

Car Call Module Specification



Explanations:

A: When the lift with only one COP, then J1.J2.J3 no need to short connect.

B: Single (Double) door operator open and close at the same time, short connect "J2".

C: Double door operators and COPs, open and close door separated (Door open at called side), short connect J1. Main COP short connect J1, assist COP no need short connect.

J4: Spare

Terminal Explanations:

1- 4 pins socket (CAN1;CAN2)

+24V----- Positive Power input (+24v)

CANH -----CAN BUS High Level signal input.

CANL -----CAN BUS Low Level signal input.

GND ----- Negative power input (Connect to communicate cables' shield layer)

2- 8pins socket: JP1-8

X01 With/Without Driver signal input

X02 Up door area input signal (Only use for re-level)

X03 Anti-nuisance function input

X04 Elevator dedication input

X05 Door close delay input

X06 Down door area input signal (Only use for re-level)

X07 Door Open input signal

X08 Door close input signal

3- Two 10 pins socket (JP3-10; JP2-10)

Y01 7-segment code A1

Y02 7-segment code B1

Y03 7-segment code C1

Y04 7-segment code D1

Y05 7-segment code E1

Y06 7-segment code F1

Y07 7-segment code G1

Y08 Down Direction

Y09 Up direction

Y10 7-segment code A2

Y11 7-segment code B2

Y12 7-segment code C2

Y13 7-segment code D2

Y14 7-segment code E2

Y15 7-segment code F2

Y16 7-segment code G2

4- 12 pins socket (CONO-12)

VCC -----Power positive point, use for lift call signal.

Q1 -----Door Close output signal

Q2 -----Door Open output signal

Q3 -----Spare output signal

Q4 -----Arrival Gong

Q5 -----Buzzer output signal

Q6 -----Overload output signal

Q7 -----Inspection Light signal

Q8 -----Spare output signal

GND-----Power Negative potential



ASANOR

LIFT CONTROLLER

Head Office Address: No.49, 1th Floor, Valiasr Complex, Firoozeh St.,
Valiasr Ave., Tehran , Iran

Tel: +98 21 88942045/88945807

www.asanoor.com